

# Strengthening Our Community in the Face of Population Decline



Dayton Ave. & Dupont St. June 2009



Dayton Ave. & Dupont St. September 2009

# Purpose

- Learn about social and economic challenges
- Learn about property abandonment and Land Bank interventions
- Hear ideas from local leaders about how to strengthen our community in the face of population decline,
- Ask questions and share your ideas

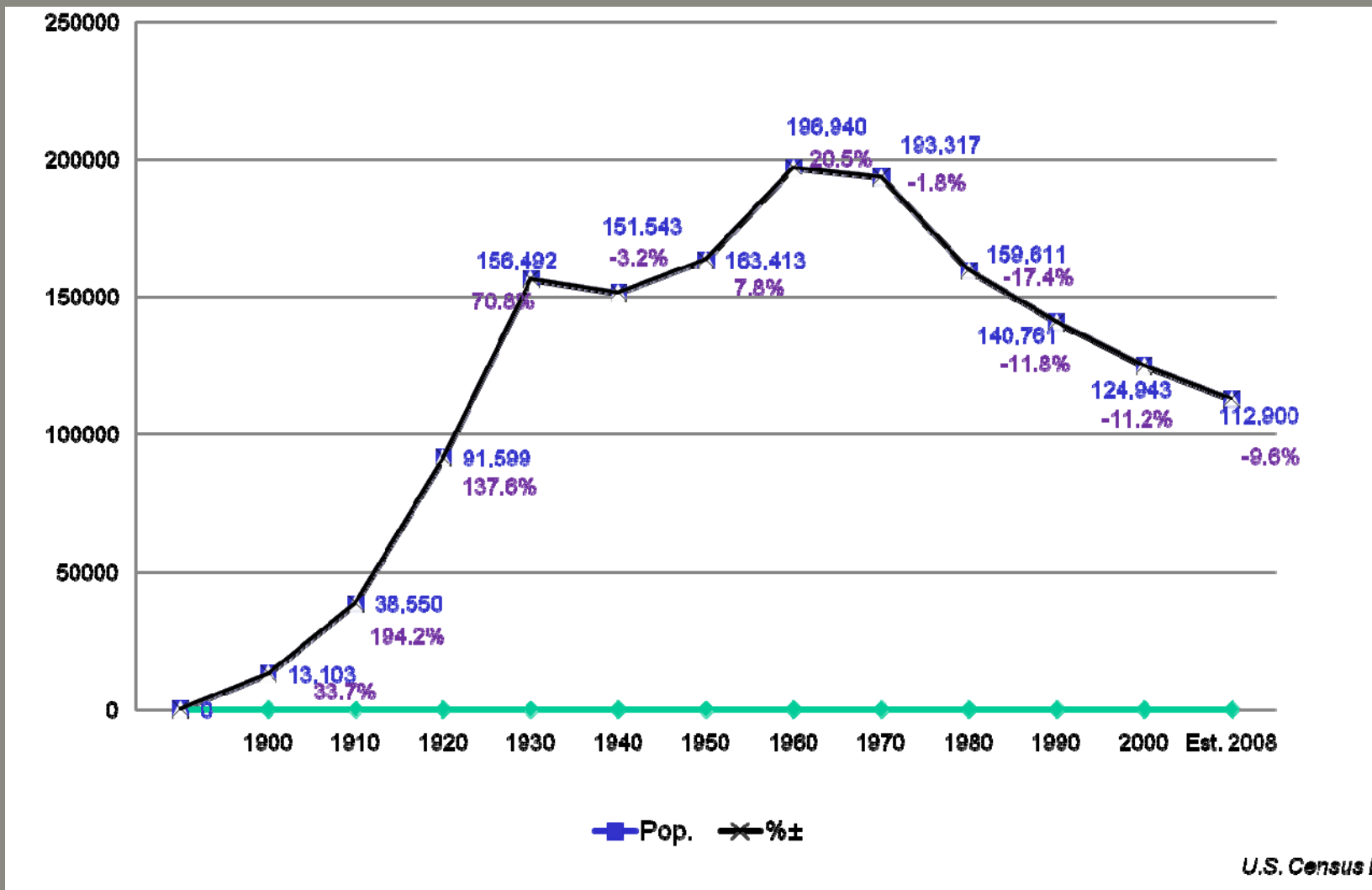
# Agenda

- I. Welcome, purpose and outline
- II. Genesee County Population Trends- Anthony Turner, U.S. Census
- III. Abandoned Land: Challenges, Opportunities & Land Bank Interventions - Doug Weiland, Genesee County Land Bank
- IV. Discussion
- V. Perspectives
- VI. Announcements
- VII. Adjourn

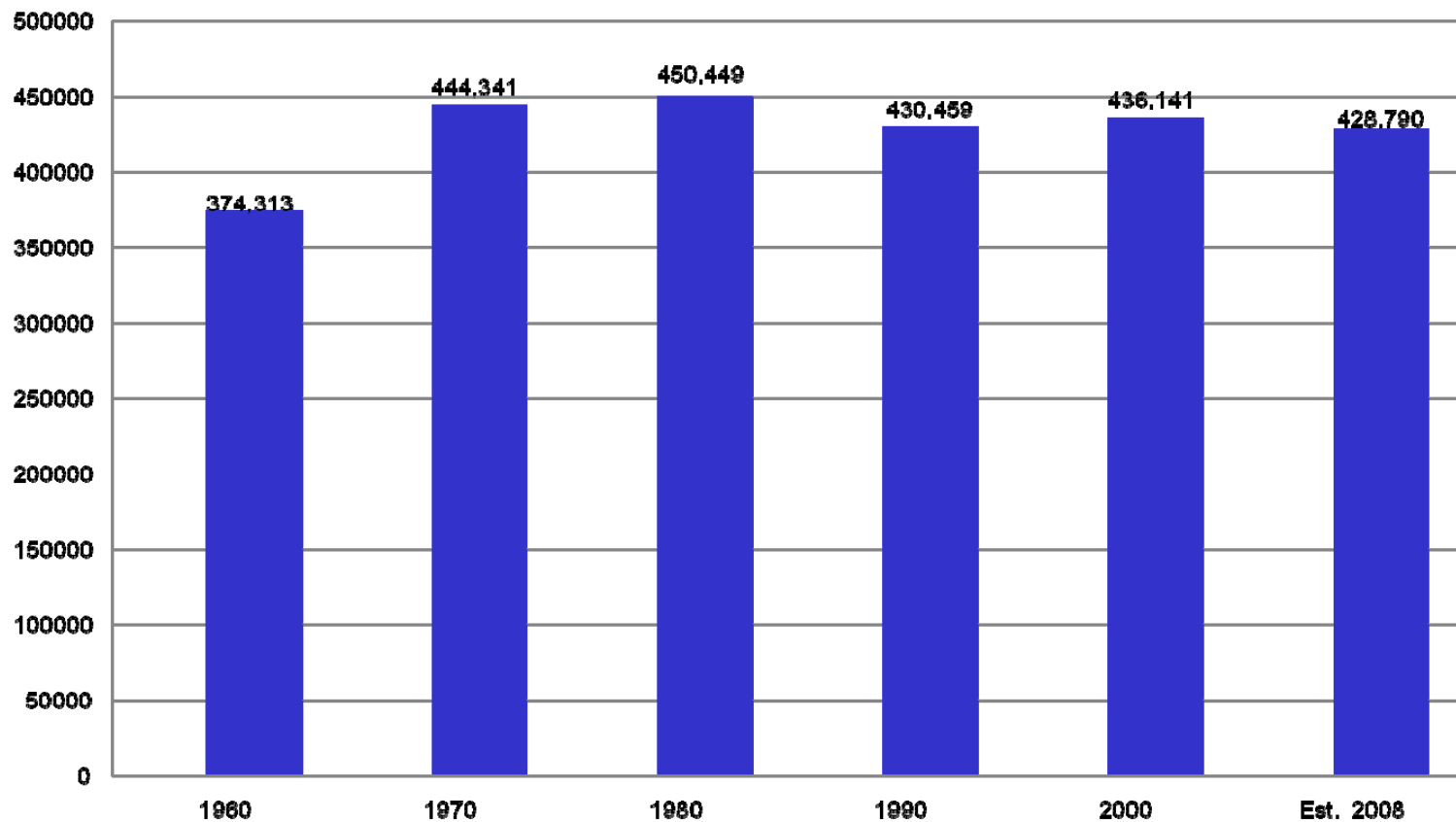
# Genesee County Population Trends

Anthony Turner, US Census  
2010 Census

# Historical Populations of Flint, Michigan by Decennial Census: 1900 to Present

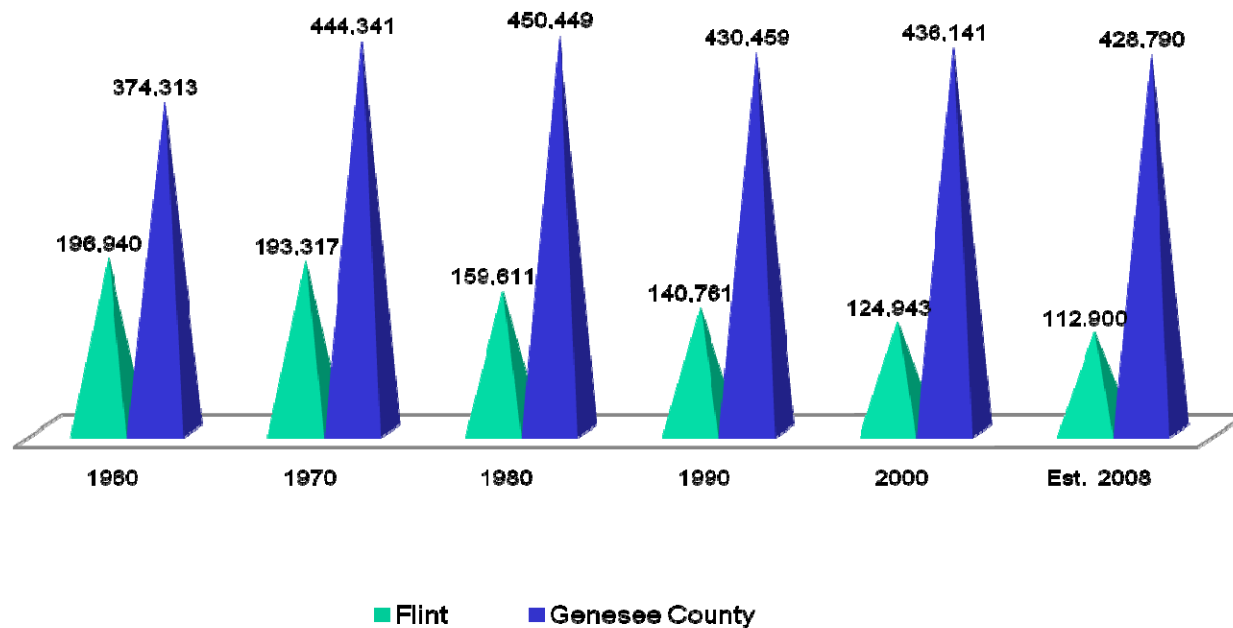


# Populations of Genesee County by Decennial Census: 1960 to Present



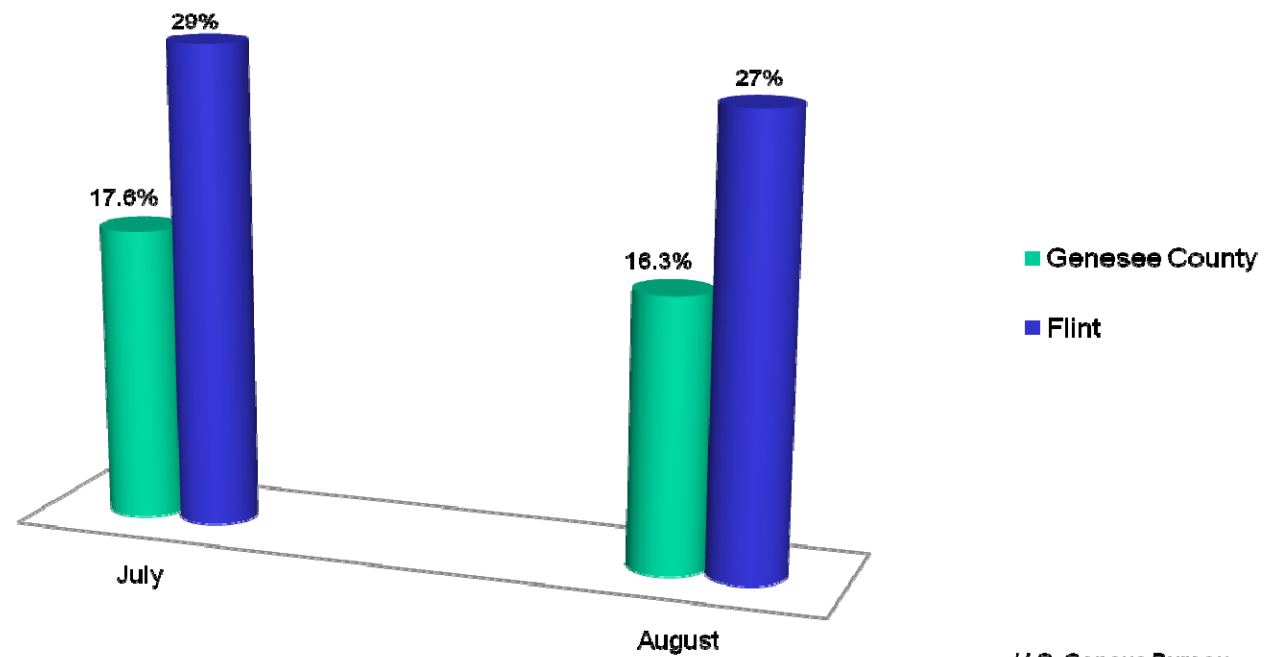
U.S. Census Bureau

# Populations of Genesee County and Flint by Decennial Census: 1960 to Present



U.S. Census Bureau

# Flint and Genesee County Unemployment Rate: July and August 2009

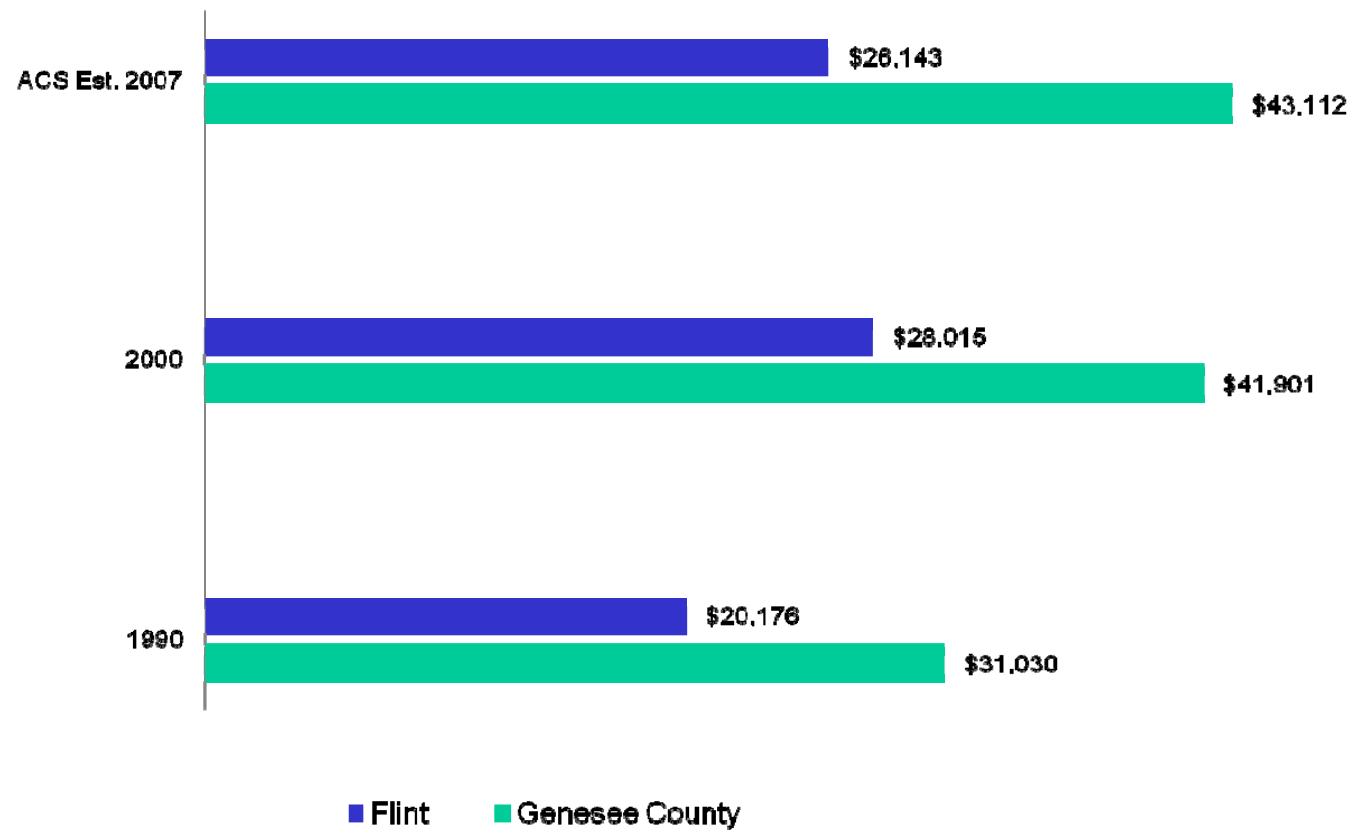


U.S. Census Bureau

# Flint and Genesee County Median Household Income

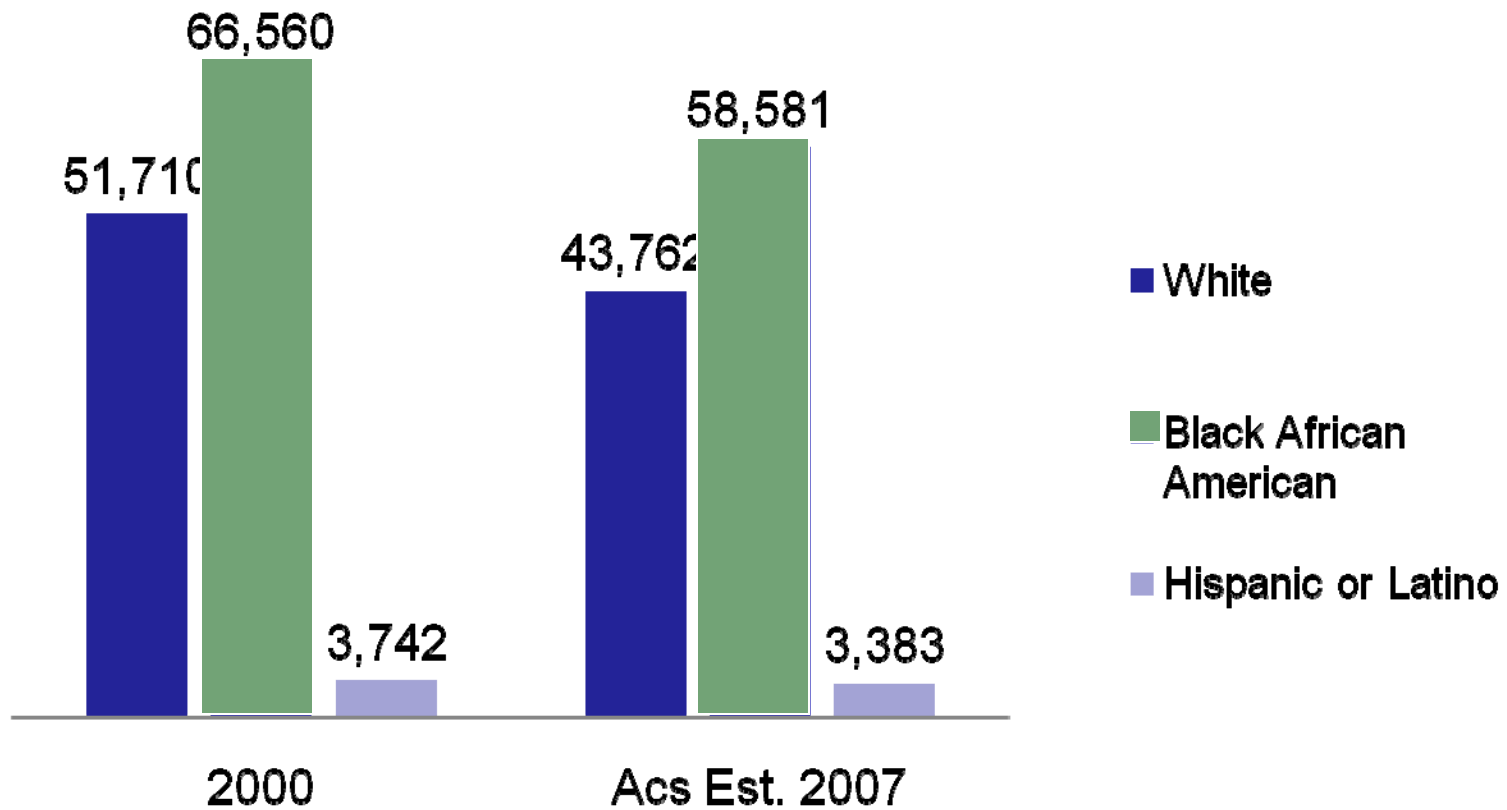
(Margin of error  $\pm 2.075$ )

(Margin of error  $\pm 1.689$ )



U.S. Census Bureau

# Flint Population by Race



U.S. Census Bureau

# Federal Law and Policy

## Legal Basis for the Census

- The U.S. Constitution, Article I, Section 2 mandates that an apportionment of representatives among the states, for the House of Representatives, be conducted every ten years (decennially) using census data
- Apportionment: process of dividing the 435 seats in the US House of Representatives among the 50 states

# Confidentiality

- Title 13, U.S. Code safeguards an individual's privacy; Information is used only for statistical purposes
- Census Bureau employees cannot share respondent information
- Disclosure is a felony-penalty for wrongful disclosure is up to five years imprisonment and/or a fine up to \$250,000

# THE 2010 CENSUS IS ABOUT YOUR POWER & MONEY

- The Census determines your share of power in the U.S House of Representatives. There are 435 seats in the House and the Census data is used for the apportionment of those seats!
- The Census also determines how your State House of Representatives, your local County Districts and even your city wards are apportioned!
- Having an accurate count in 2010 is Vital! The quality of life for your next 10 years is dependent on it!

## THE 2010 CENSUS IS ABOUT YOUR POWER & MONEY

- The Census determines your share of over \$400 Billion that is distributed by the Federal Government!
- That is over \$4 Trillion dollars over the next ten (10) years!
- Having an accurate count in 2010 is vital! The quality of life for your next 10 years is dependent on it!

# What are some of the Federal programs affected by Census data, that fund our local Community?

## Agriculture

- School Breakfast
- WIC
- School Lunch
- Child and Adult Food Program

## Education

- Adult Education
- Title 1 Grants
- Special Education
- School Renovation Grants

# What are some of the Federal programs affected by Census data, that fund our local Community?

## Health and Human Services

- Program for Aging
- TANF
- Child Care Grant
- Low Income Home Energy Assistance
- Head Start
- Medicaid Grants

## Housing & Urban Development (HUD)

- CDBG – Entitlement & State Program
- Home Investment Partnership Program Justice

What are some of the Federal programs affected by Census data, that fund your local Community?

Labor

- Employment Service
- Unemployment Insurance Program
- WIA – Workforce Investment Act

Transportation

- Airport Improvement Program
- Highway Planning and Construction
- Federal Transit Formula Grants for Urbanized Areas

# Thank You!

## Census 2010 Staff

Vincent Kountz- Partnership Coordinator  
313-396-5200

Anthony Turner - Partnership Specialist -  
Genesee, Bay, Livingston, Oakland, Saginaw, Lapeer,  
Sanilac & Huron Counties

313-799-1446 (Govt. Phone)  
[anthony.d.turner@census.gov](mailto:anthony.d.turner@census.gov)

# Abandoned Land: Challenges, Opportunities and Land Bank Interventions

Doug Weiland  
Genesee County Land Bank



# Population Loss in Flint

- Since 1960, Flint has lost over 84,000 people
- Nearly 34,000 households lost



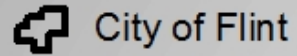
# Abandoned Land In Flint

- 12,000 vacant lots
- 6,000 abandoned houses
- Total of 18,000 parcels
- 32% of all the property in Flint is abandoned



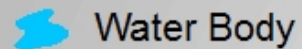
# Residential Vacancy by Block, 2008

## Legend



City of Flint

Street



Water Body

## Vacancy Rate (Parcel Number)

0% - 9%

10% - 19%

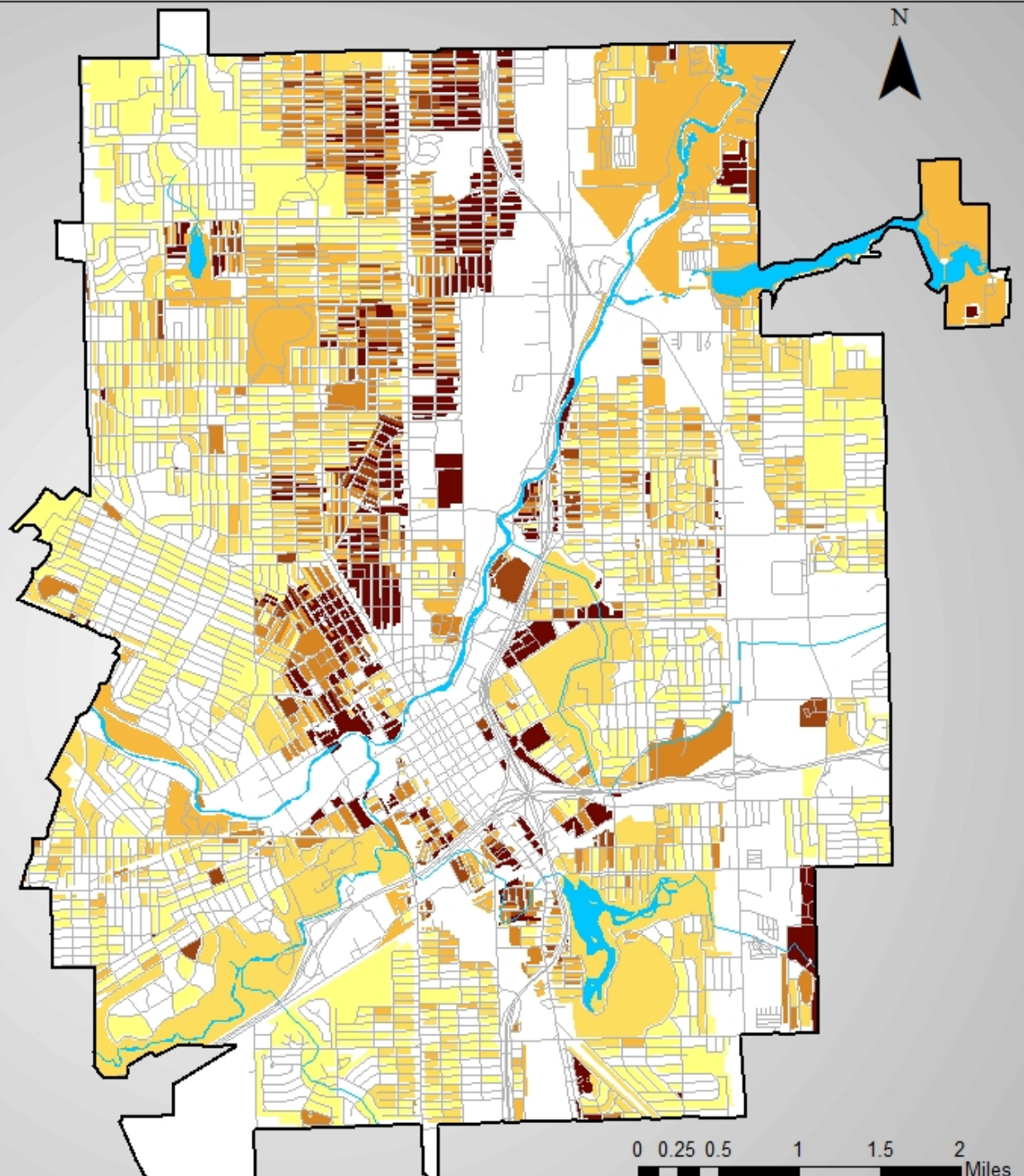
20% - 29%

30% - 39%

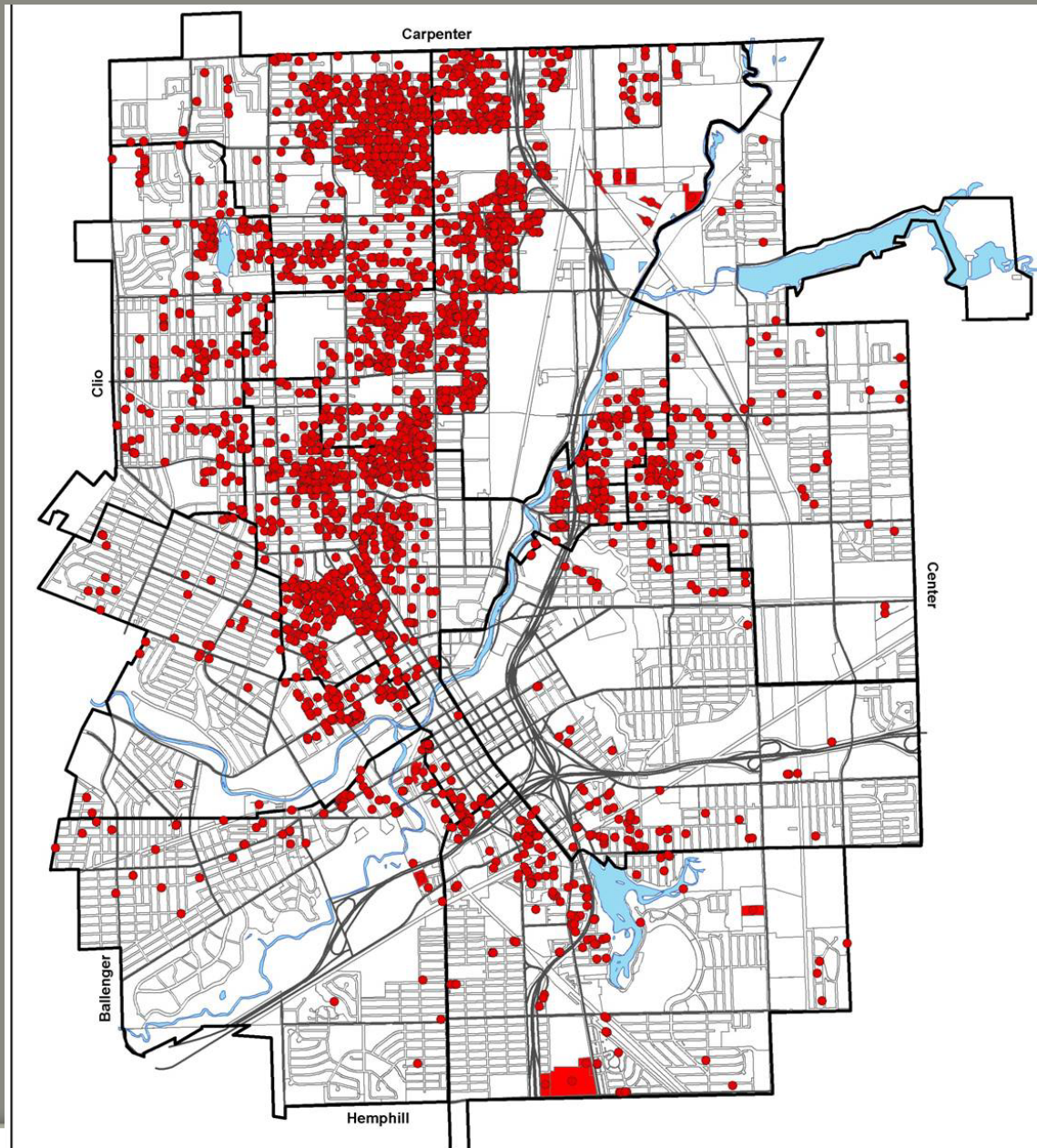
40% - 49%

50% and more

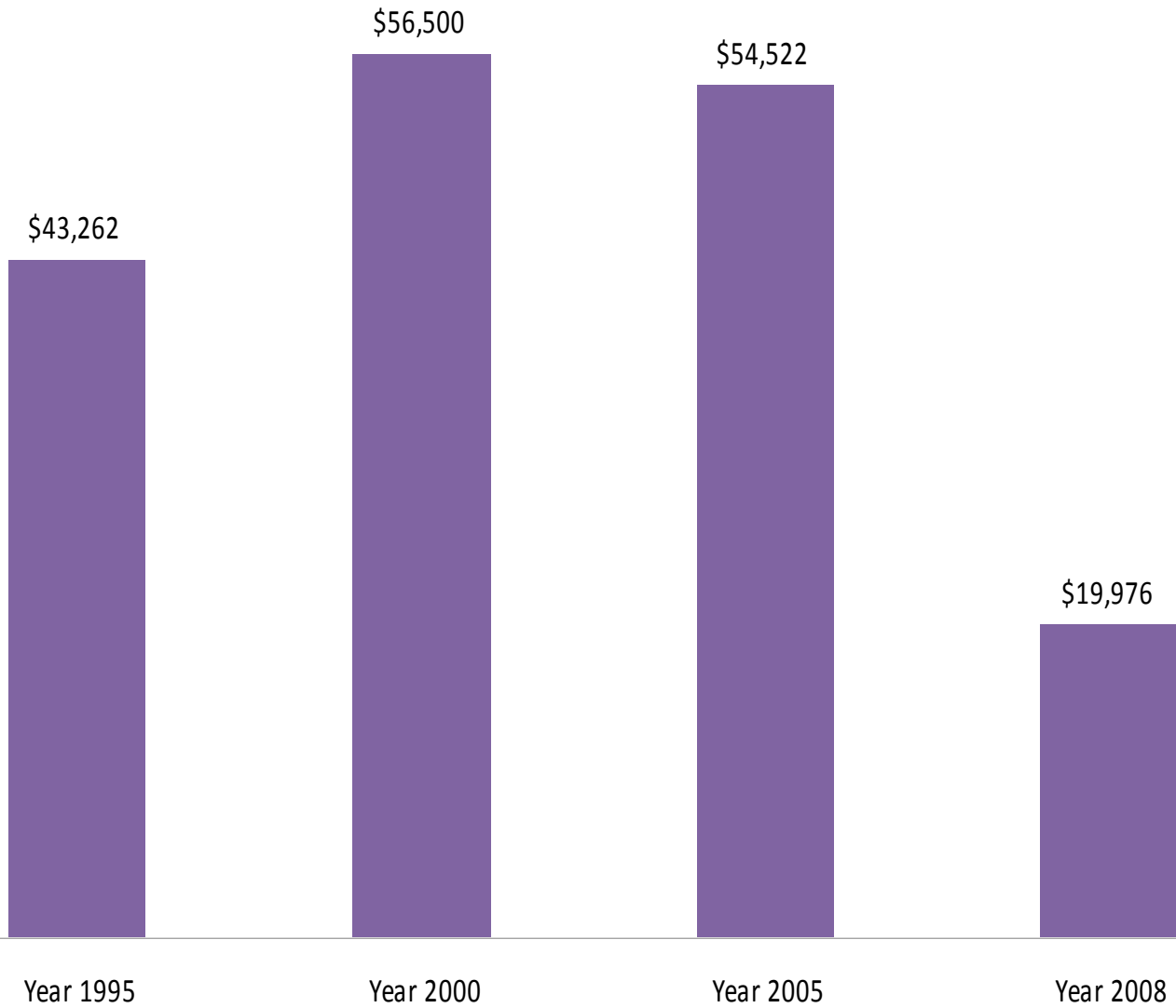
Source: Genesee Land Bank



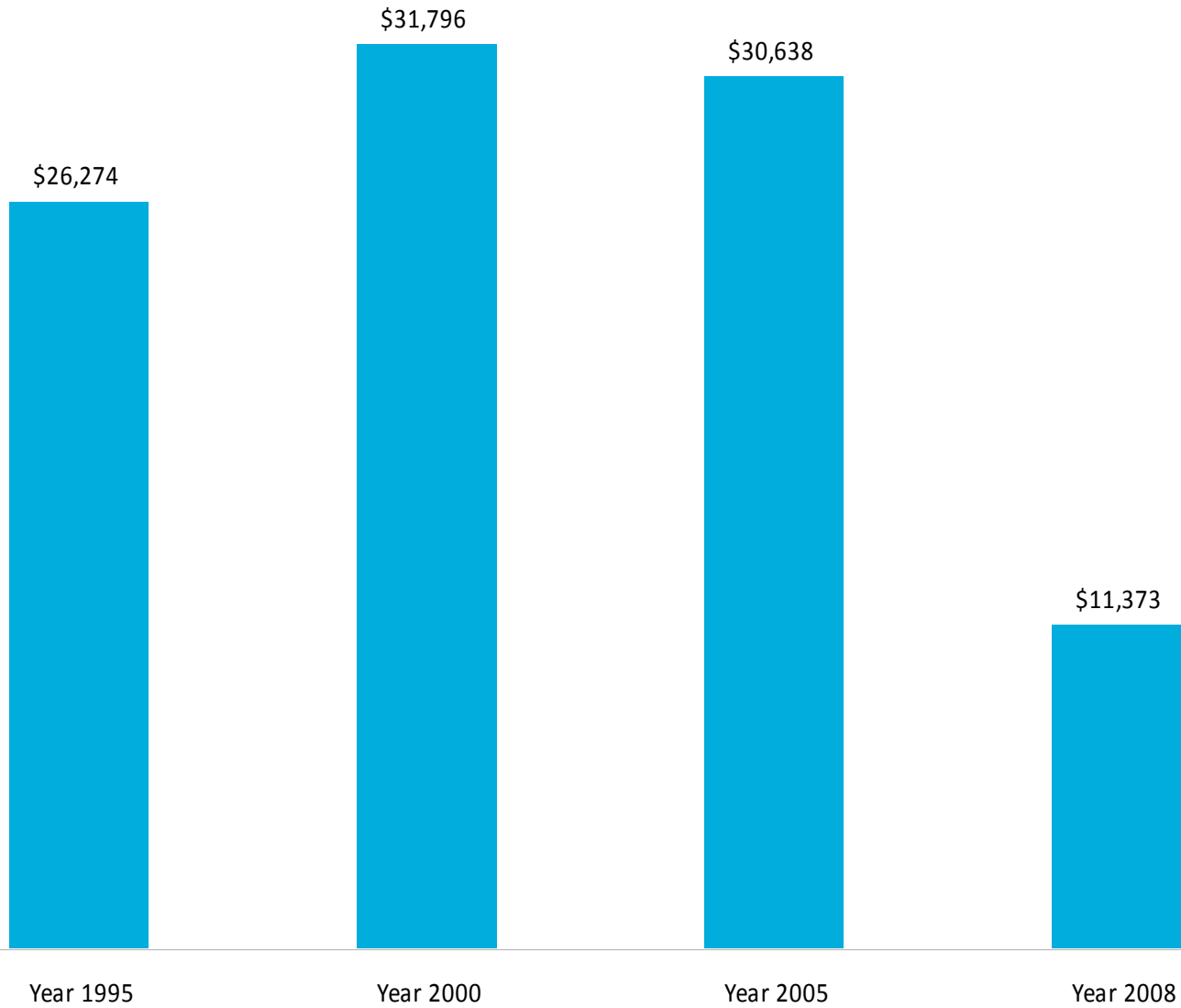
# 3624 Land Bank properties



# City of Flint Average Sales Price



## Beecher District Average Sales Price



# All of Genesee County excluding Beecher & City of Flint Average Sales Price



# Challenges & Opportunities






# City of Flint

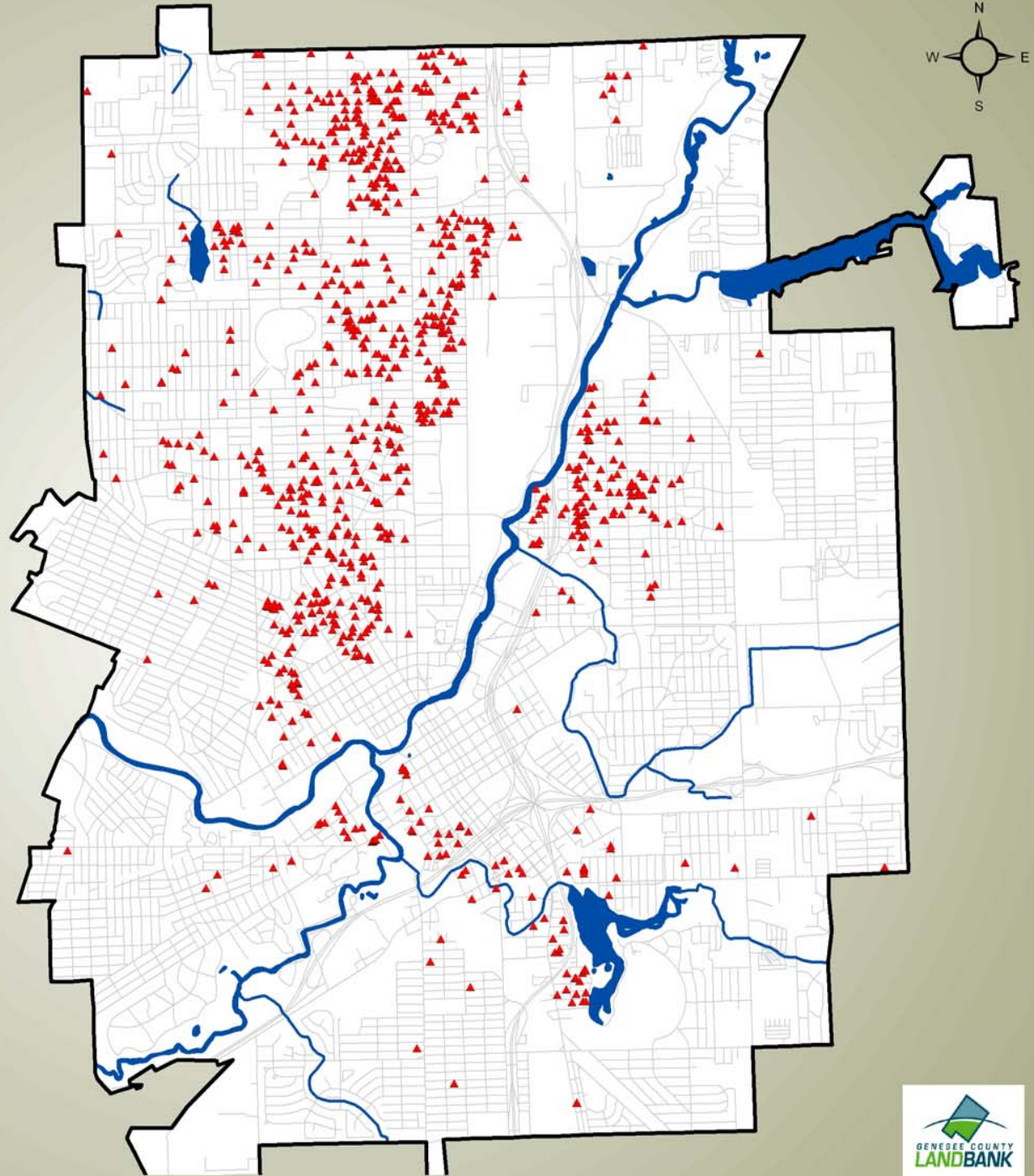
## Land Bank Demolitions Completed

### Legend

-  City of Flint
-  Rivers
-  Lakes
-  Roads

### Demolitions

-  Completed Demolitions  
**Total = 914**




# City of Flint

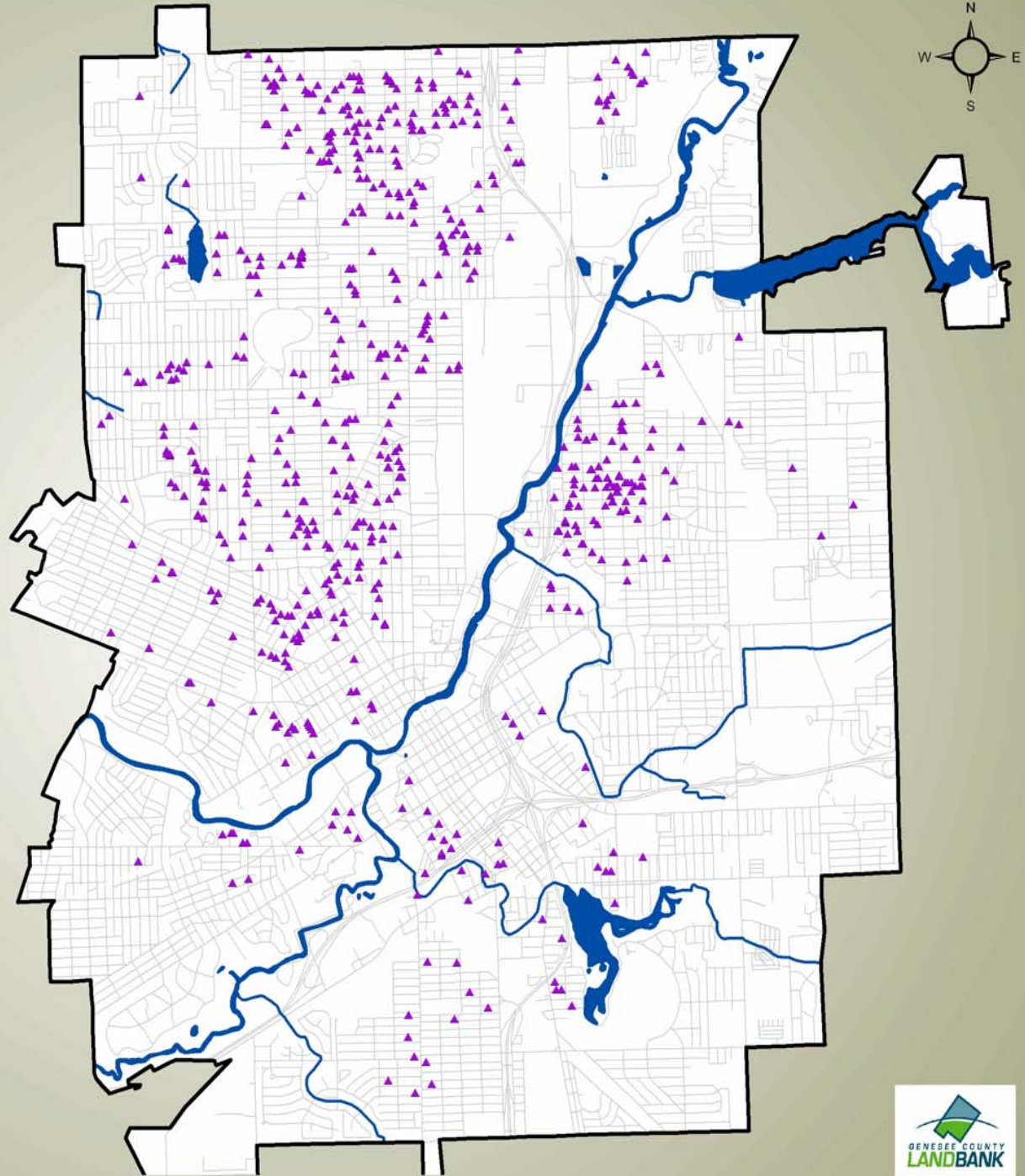
## Land Bank Demolitions ~Potential~

### Legend

-  City of Flint
-  Rivers
-  Lakes
-  Roads

### Demolitions

-  Potential Demolitions  
**Total = 615**



# Renovations, Sales & Rentals




# City of Flint

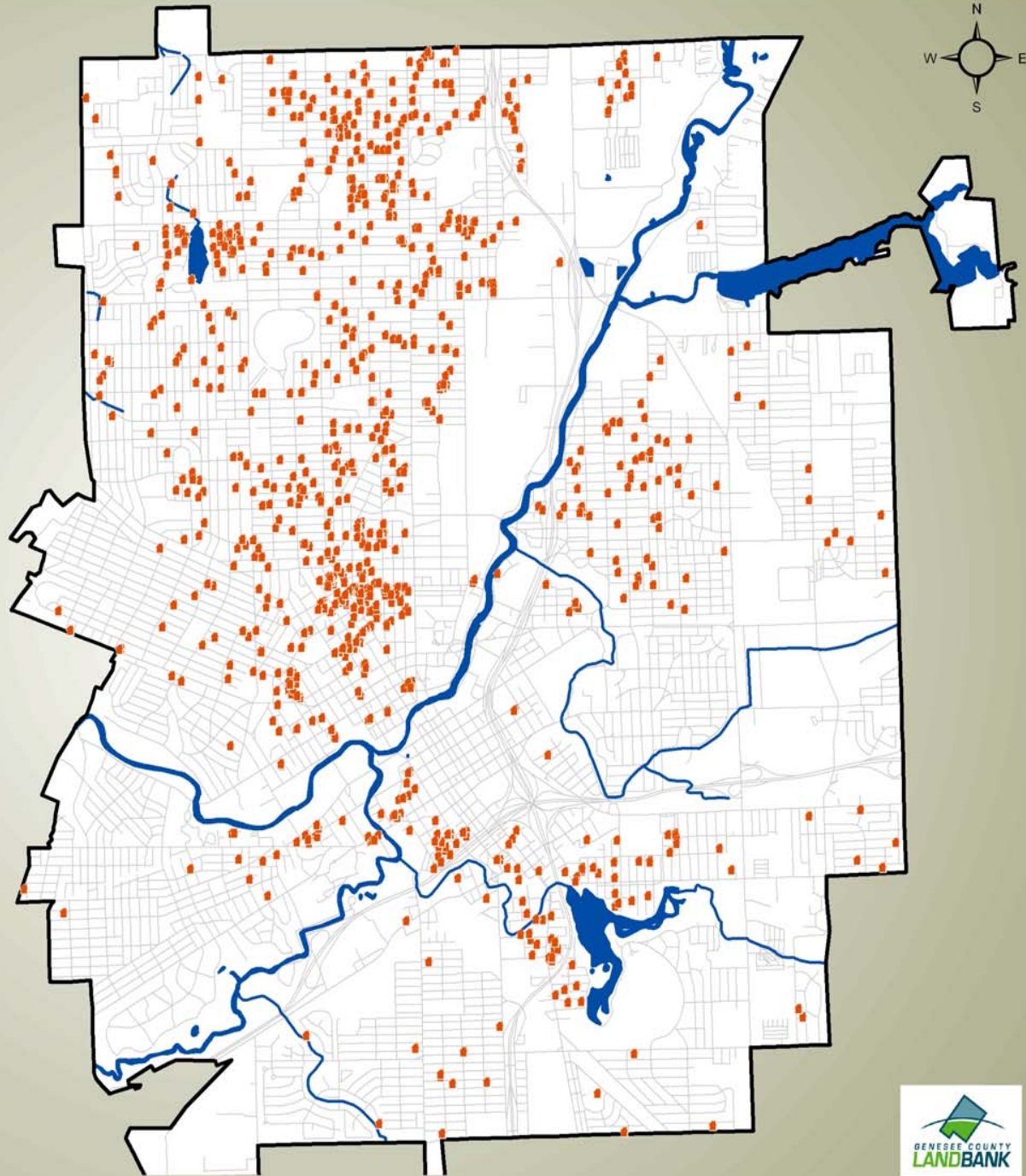
## Land Bank Property Sales

### Legend

-  City of Flint
-  Rivers
-  Lakes
-  Roads

### Property Sales

-  Residential Lots,  
Commercial, Industrial,  
Other
- Total Sold = 1045**



0 0.25 0.5 1 1.5 2 Miles



# Property Maintenance



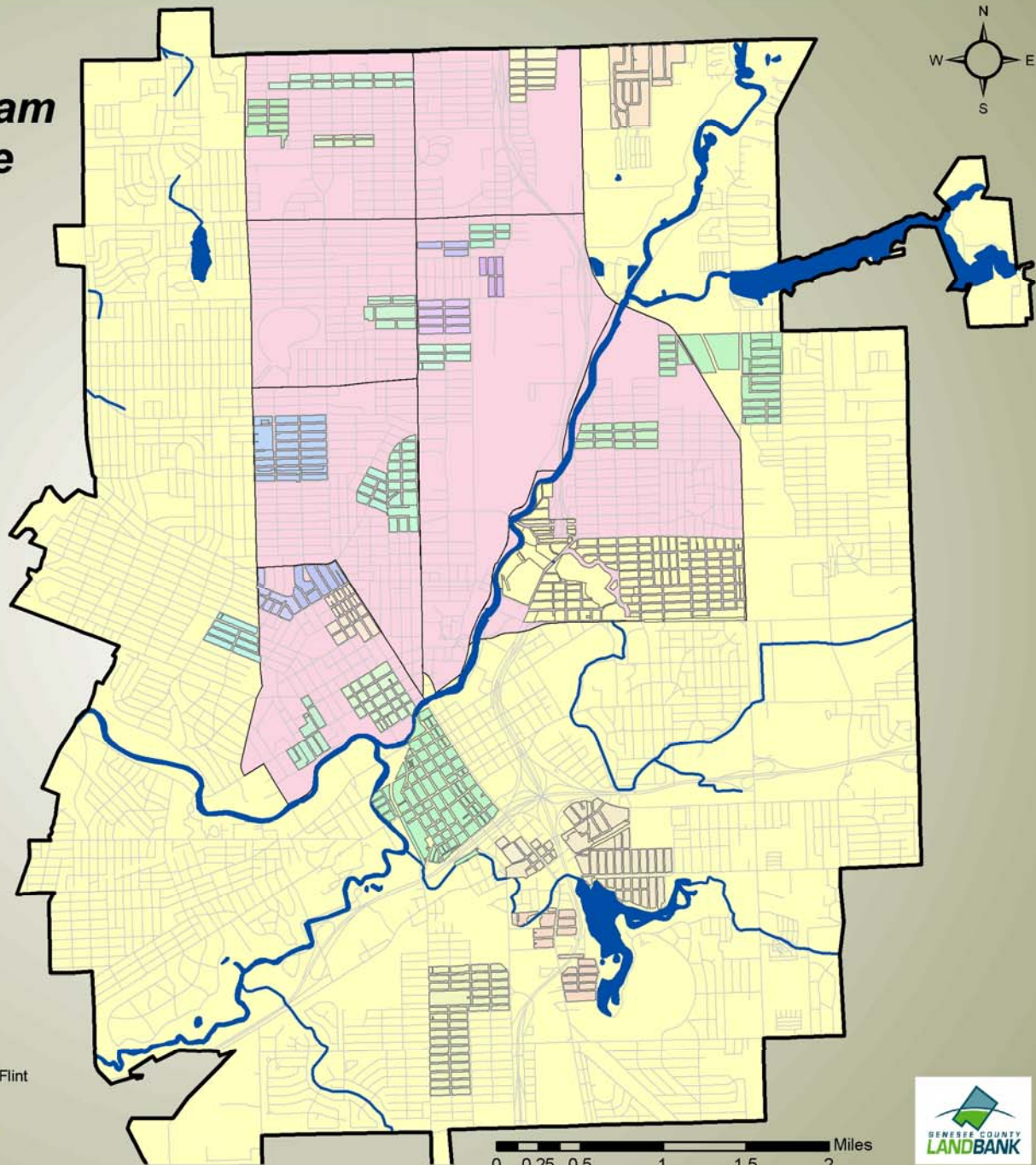
# City of Flint

## Clean and Green Program Property Maintenance Coverage Areas

### Legend

- Area Coordinated by City of Flint
- Area Coordinated by Land Bank
- Block by Block Revitalization Corporation
- Cathedral of Faith COGIC
- Christian XPosure
- Church Without Walls
- Eliezer Church
- East Piper Avenue Block Club
- Freedom Center North
- Flint Urban Gardening and Land Use Corporation
- Gift of Life COGIC
- Greater New Bethel COGIC
- Goodwill Industries of Mid Michigan
- Grand Traverse District Neighborhood Association
- Greater Efsians COGIC
- Holy Ghost COGIC
- Holy Hill COGIC
- International Academy of Flint
- Kearsley Longway Eastside Area Neighborhood
- Metropolitan Baptist Church
- Mount Tabor Missionary Baptist Church
- My Brothers Keeper
- Neighbors
- New Life COGIC
- Northeast Carpenter Road Block Club
- Northeast Village Citizens District Council
- Open Door Temple COGIC
- Salem Housing CDC
- T.R Harris CDC
- Urban Community Youth Outreach

- City of Flint
- Rivers
- Lakes
- Roads



# Side Lots, Adopt-a-Lot, Clean and Green

Thanks for making our  
community **CLEAN &  
GREEN!**

Eastside Neighbors  
are taking care of  
**24** properties  
in this area!

GENESEE COUNTY  
**LANDBANK** Clean & Green Program Area



# Partner Gardens



**Piper Green Corps - Before**



**Piper Green Corps - After**



**Harvesting Earth Farm**



**Urban Community Youth Outreach**

# City of Flint


## Land Bank

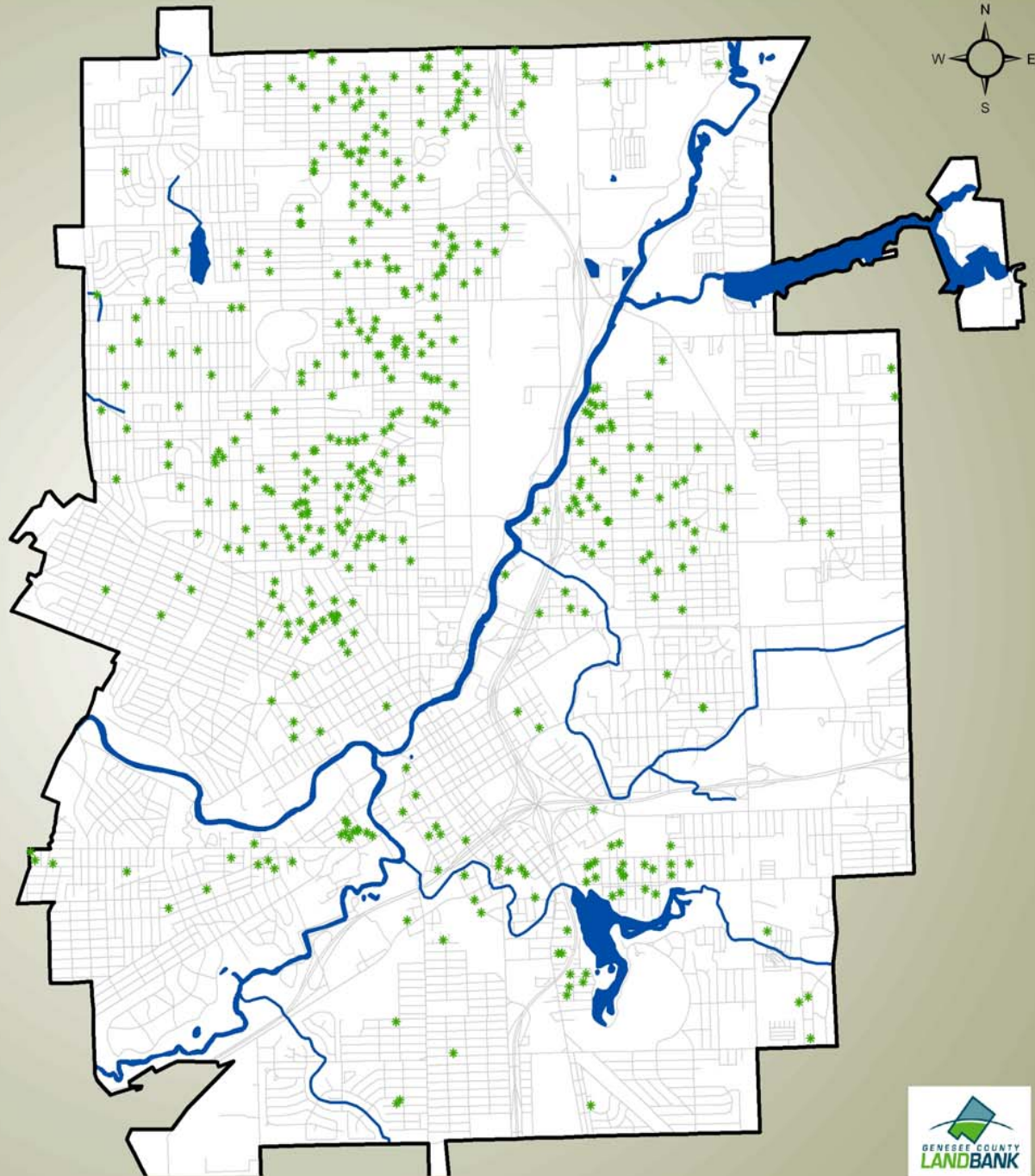
## Side Lot Sales

### Legend

-  City of Flint
-  Rivers
-  Lakes
-  Roads

### Property Sales

-  Side Lots
- Total Sold = 434**



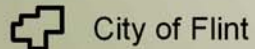
# City of Flint

## Land Bank Development Projects

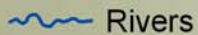
### Legend

#### Project Name

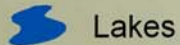
- 1 Rosewood Manor
- 2 FlintNIPP
- 3 Greater Eastside
- 4 Metawananee Hills/Salem Housing
- 5 Hurley Area Housing
- 6 Carriage Town Rehabs
- 7 Hoffmans Deli
- 8 Berridge Place
- 9 Durant
- 10 Land Bank Center
- 11 GTDNA Habitat
- 12 Genesee Business Center



City of Flint

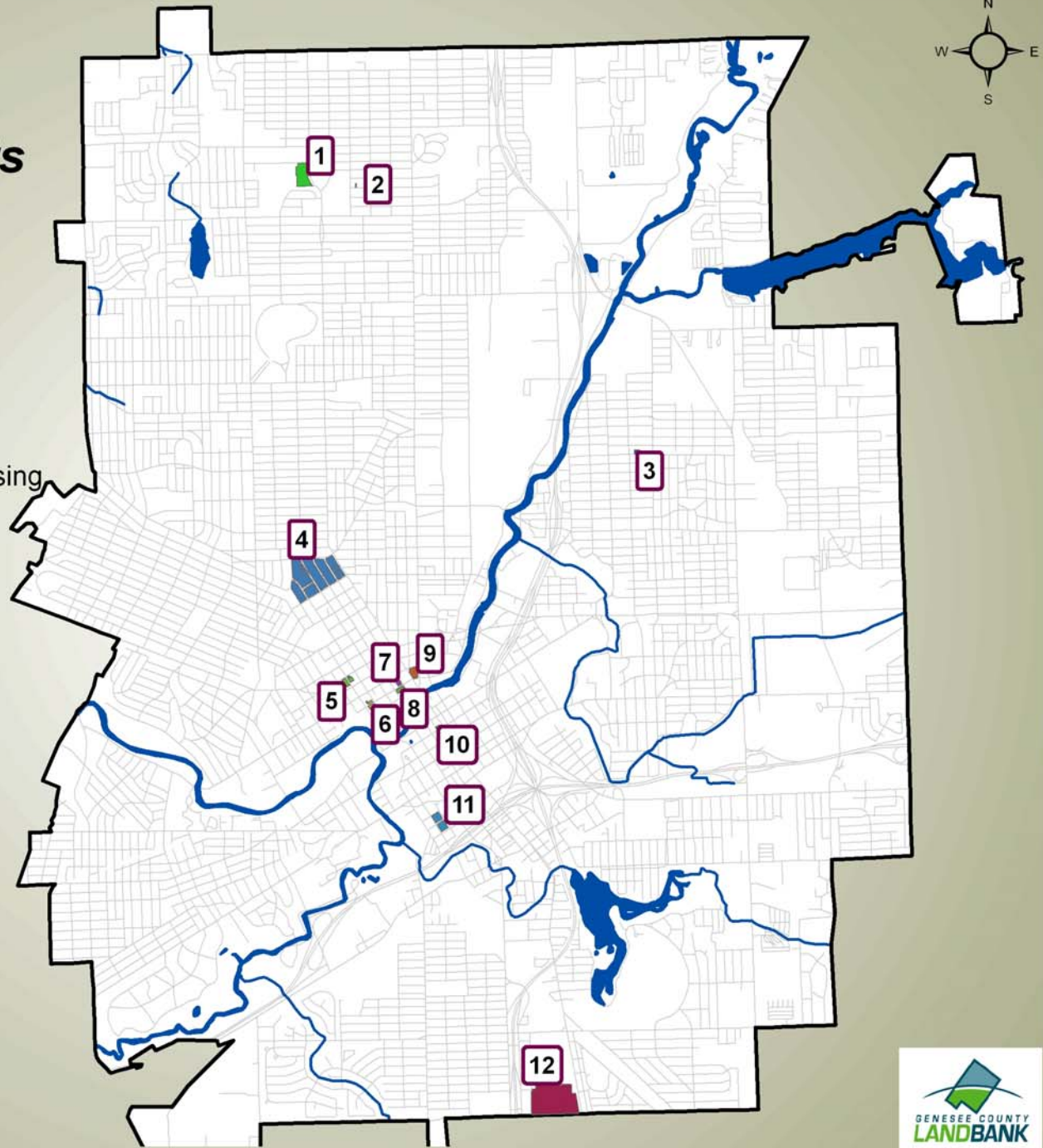
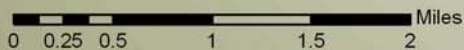


Rivers



Lakes

Roads

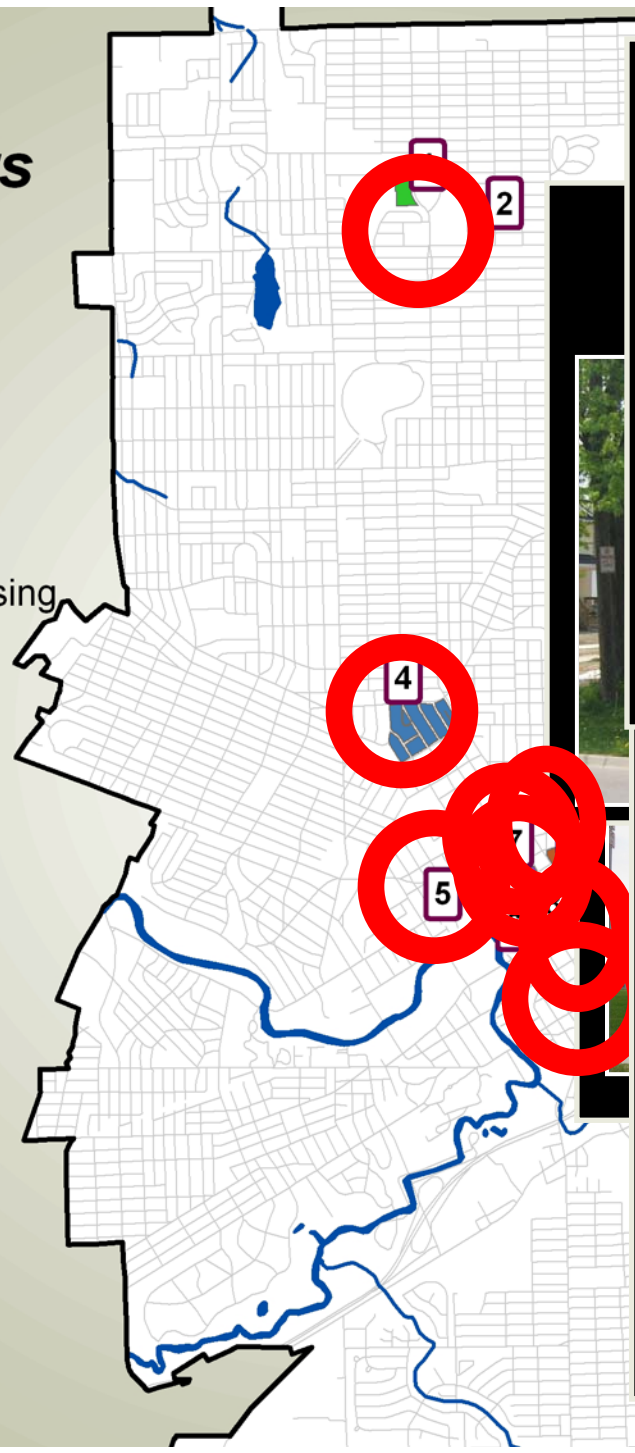


# City of Flint Land Bank Development Projects

## Legend

### Project Name

- 1 Rosewood Manor
- 2 FlintNIPP
- 3 Greater Eastside
- 4 Metawananee Hills/Salem Housing
- 5 Hurley Area Housing
- 6 Carriage Town Rehabs
- 7 Hoffmans Deli
- 8 Berridge Place
- 9 Durant
- 10 Land Bank Center
- 11 GTDNA Habitat
- 12 Genesee Business Center
- City of Flint
- Rivers
- Lakes
- Roads



## 8 - Berridge Place



# Strengthening Our Community in the Face of Population Decline



Dayton Ave. & Dupont St. June 2009



Dayton Ave. & Dupont St. September 2009

# Discussion Questions?

What ideas do you have for strengthening our community in the face of population decline?

# *Group Agreements*

- *Everyone should treat everyone else with respect.*
- *All comments are important.*
- *Refrain from side conversations.*
- *Don't interrupt. Listen to the whole of others' thoughts – actually listen, rather than just running over your own response in your head.*
- *Respect the group's time. Try to keep your comments reasonably short and to the point, so that others have a chance to respond.*
- *Everyone is responsible for following and upholding the group agreements.*

# Strengthening Our Community in the Face of Population Decline



Dayton Ave. & Dupont St. June 2009



Dayton Ave. & Dupont St. September 2009

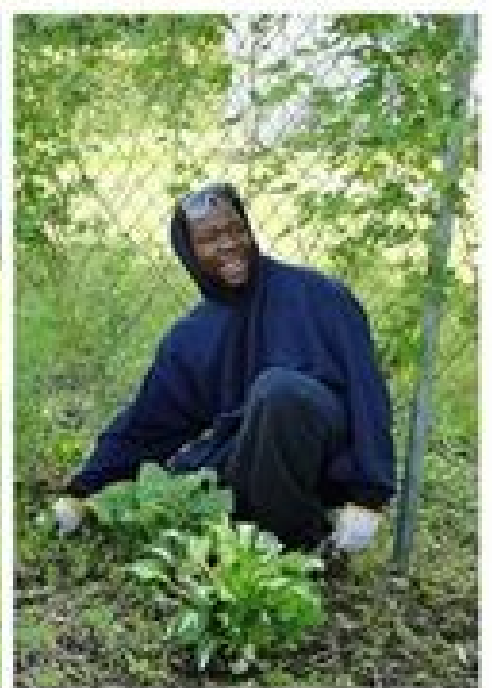
Question:

What can we do to strengthen  
our community in the face of  
population decline?

# Panelists

- Barbara Griffith-Wilson
- Greg Eason









# Strengthening Our Community in the Face of Population Decline



Dayton Ave. & Dupont St. June 2009



Dayton Ave. & Dupont St. September 2009